

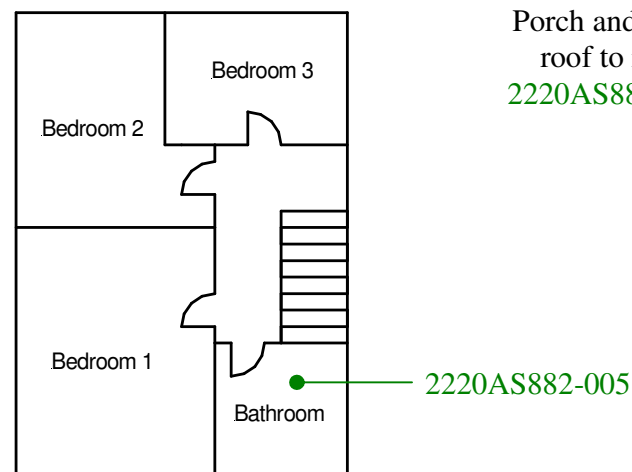
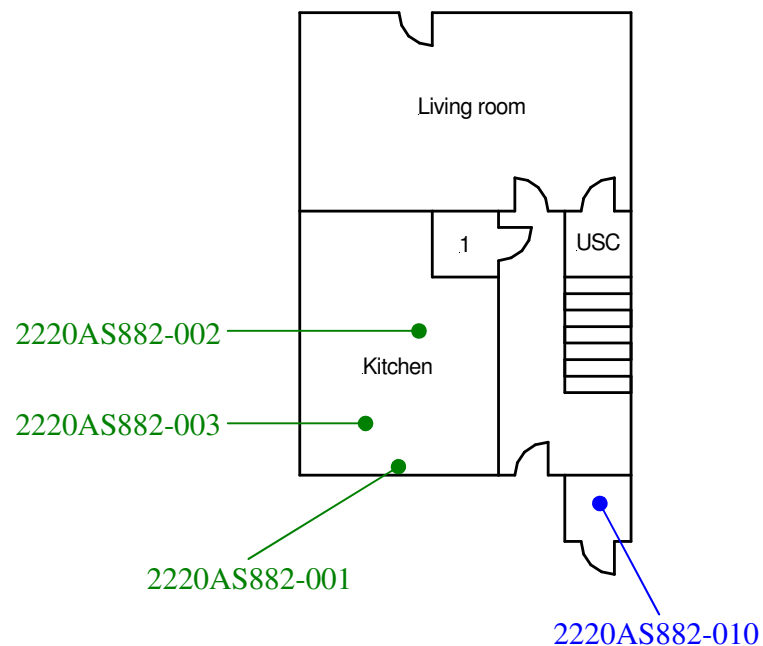
External-DPC
2220AS882-009

Ground floor-All areas
2220AS882-004

First floor-All areas
2220AS882-006

Roof space
2220AS882-007

Porch and main
roof to rear
2220AS882-008



Site reference points colour coding:

RED for 'positive', 'strongly presumed', 'presumed' and 'contaminated' ACMs

BLUE for 'Presumed to contain ACMs due to no access'

GREEN for 'discounted materials', 'no asbestos suspected' and 'negative'

BLACK for 'removed' ACMs

Do not scale, not dimensionally accurate

Note:

This must be reproduced in colour and is to be read in conjunction with the full report.



Annex III Project Ref. 2220AS882
16 Heather Close, Treaw Road,
Treaw, Tonypandy.
Ground and First Floor Plan