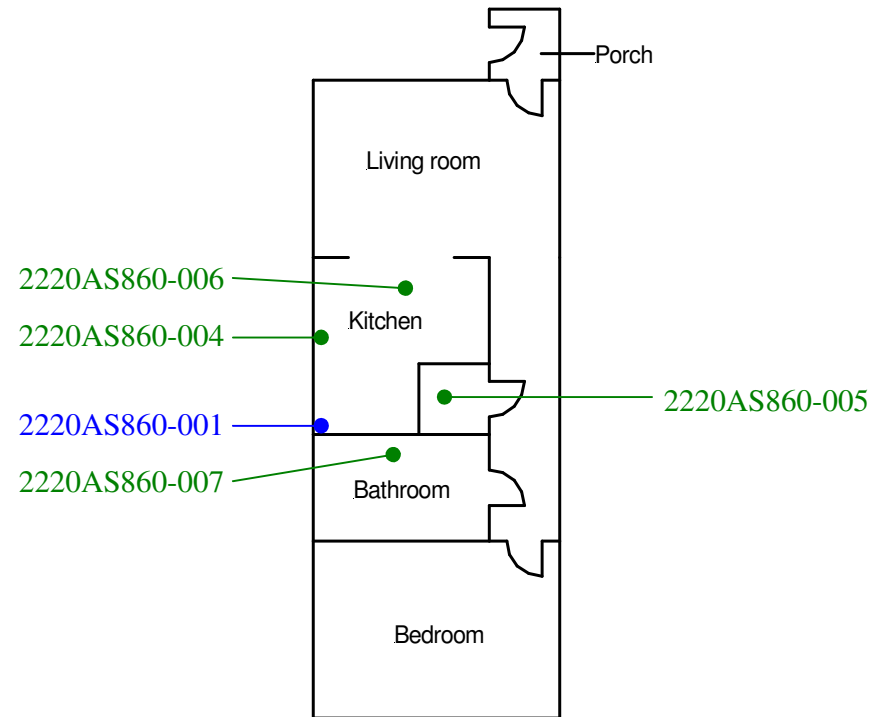


All areas  
2220AS860-003

Ground floor-All areas  
except cupboard  
2220AS860-002



**Site reference points colour coding:**

**RED** for 'positive', 'strongly presumed', 'presumed' and 'contaminated' ACMs

**BLUE** for 'Presumed to contain ACMs due to no access'

**GREEN** for 'discounted materials', 'no asbestos suspected' and 'negative

**BLACK** for 'removed' ACMs

**Do not scale, not dimensionally accurate**

**Note:**

This must be reproduced in colour and is to be read in conjunction with the full report.



Annex III Project Ref. 2220AS860  
6 St Cynon Court, Partridge Square,  
Llwynypia, Tonypandy.  
Ground Floor Plan