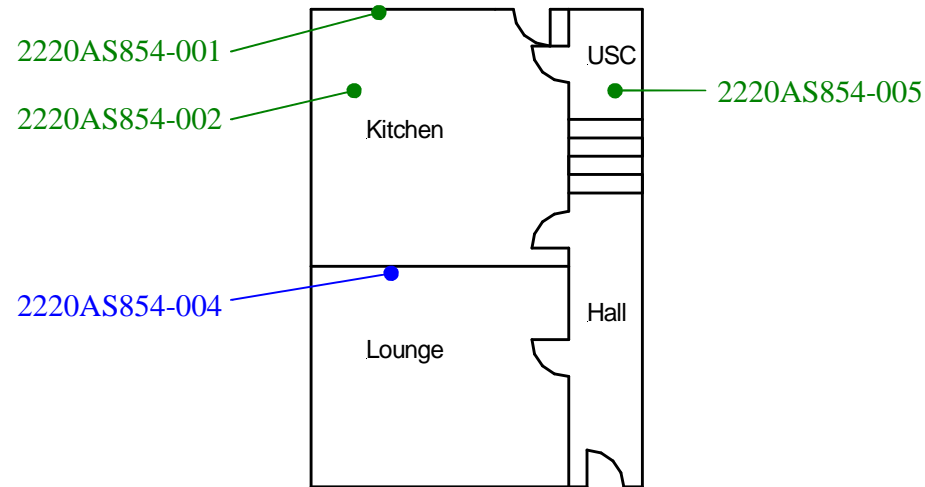
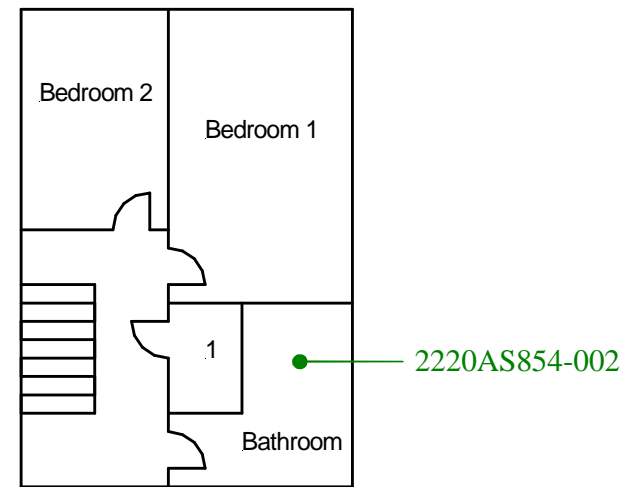


Ground floor-All areas except
under stair cupboard
2220AS854-006

Ground floor-All areas
2220AS854-003



First floor-All areas
2220AS854-007



Site reference points colour coding:

RED for 'positive', 'strongly presumed',
'presumed' and 'contaminated' ACMs

BLUE for 'Presumed to contain ACMs due to no
access'

GREEN for 'discounted materials', 'no asbestos
suspected' and 'negative

BLACK for 'removed' ACMs

Do not scale, not dimensionally accurate

Note:

This must be reproduced in colour and is to be read in conjunction
with the full report.



Annex III Project Ref. 2220AS854
2 Griffiths Street, Pentre.
Ground and First Floor Plan