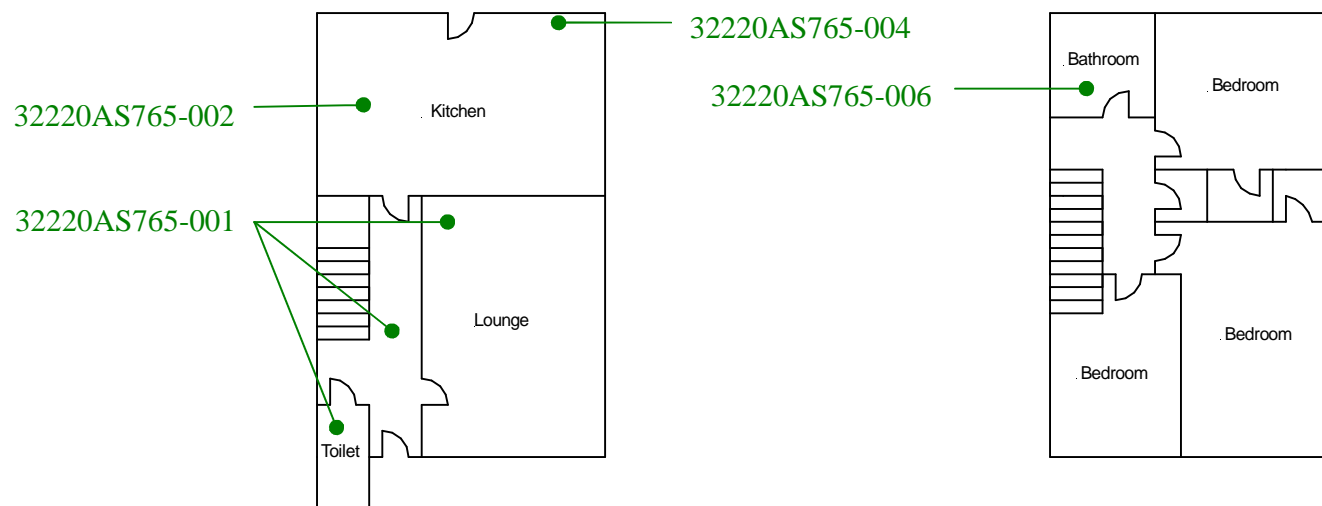


Ground floor – All areas
32220AS765-003

First floor – All areas
32220AS765-005



Roof space
32220AS765-007
External –D.P.C
32220AS765-008
External – Roof
32220AS765-009

Site reference points colour coding:

RED for 'positive', 'strongly presumed', 'presumed' and 'contaminated' ACMs

BLUE for 'Presumed to contain ACMs due to no access'

GREEN for 'discounted materials', 'no asbestos suspected' and 'negative

BLACK for 'removed' ACMs

Do not scale, not dimensionally accurate

Note:

This must be reproduced in colour and is to be read in conjunction with the full report.



Annex III Project Ref. 2220AS765
33 Gelli Fedi Rise, Brynna, Pontyclun.
Ground and First Floor Plan