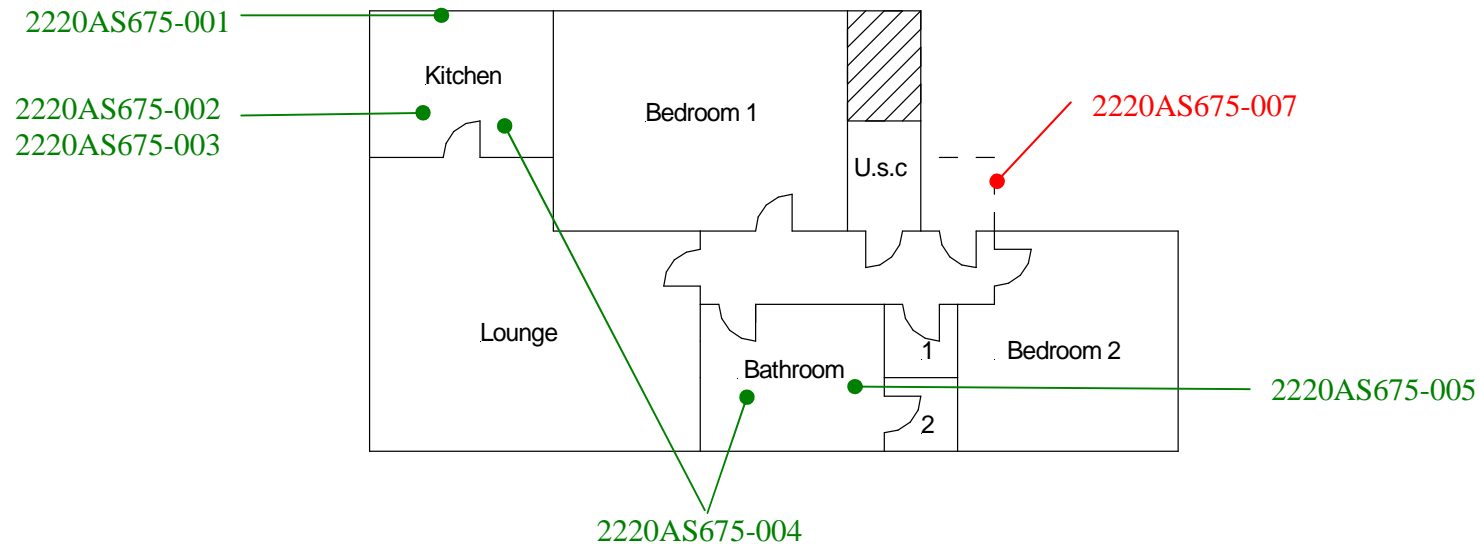


All areas
2220AS675-006



Site reference points colour coding:

RED for 'positive', 'strongly presumed', 'presumed' and 'contaminated' ACMs

BLUE for 'Presumed to contain ACMs due to no access'

GREEN for 'discounted materials', 'no asbestos suspected' and 'negative'

BLACK for 'removed' ACMs

Do not scale, not dimensionally accurate

Note:

This must be reproduced in colour and is to be read in conjunction with the full report.



Annex III Project Ref. 2220AS675
Flat 10 Ty Mawr Uchaf, Hafod Lane,
Hopkinstown, Pontypridd
Floor Plan