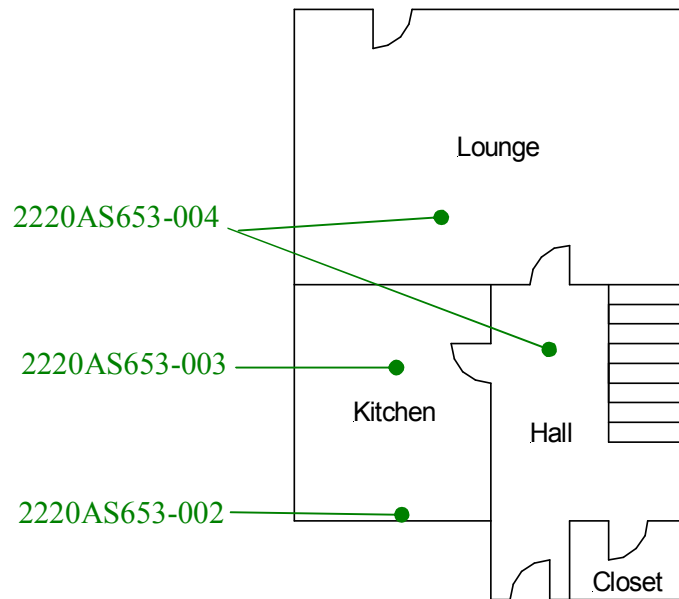
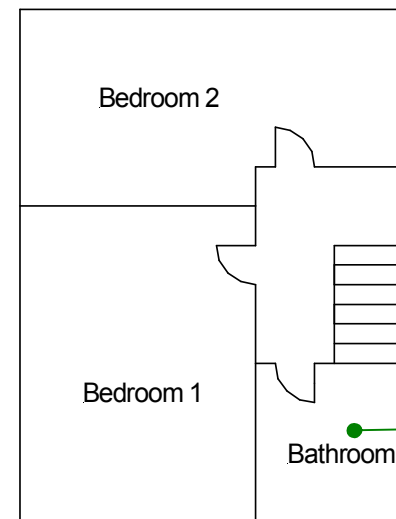


Ground floor-All areas
2220AS653-001



First floor-All areas
2220AS653-005



Roof space
2220AS653-007

External
2220AS653-008

External
2220AS653-009

Site reference points colour coding:

RED for 'positive', 'strongly presumed', 'presumed' and 'contaminated' ACMs

BLUE for 'Presumed to contain ACMs due to no access'

GREEN for 'discounted materials', 'no asbestos suspected' and 'negative'

BLACK for 'removed' ACMs

Do not scale, not dimensionally accurate

Note:

This must be reproduced in colour and is to be read in conjunction with the full report.



Annex III Project Ref. 2220AS653
4 Swn yr Afon, Dorothy Street, Gelli,
Pentre
Ground and First Floor Plan