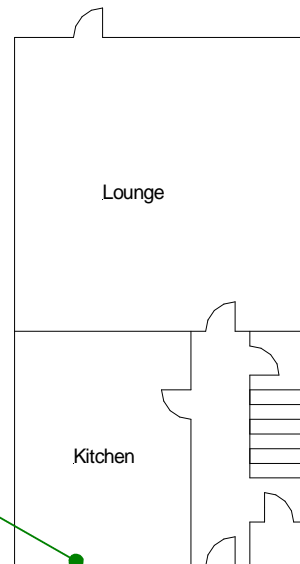


Ground floor-All areas except
under stair cupboard

2220AS641-001

Ground floor-All areas

2220AS641-002

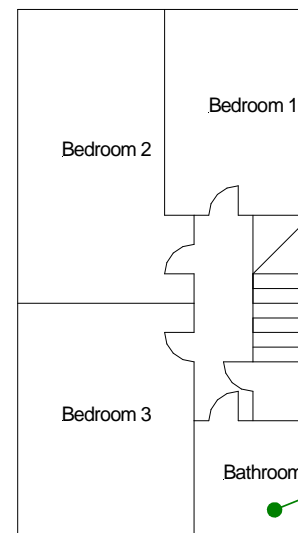


2220AS641-003

2220AS641-007

First floor-All areas

2220AS641-005



Roof space
2220AS641-006

2220AS641-004

Site reference points colour coding:

RED for 'positive', 'strongly presumed',
'presumed' and 'contaminated' ACMs

BLUE for 'Presumed to contain ACMs due to no
access'

GREEN for 'discounted materials', 'no asbestos
suspected' and 'negative

BLACK for 'removed' ACMs

Do not scale, not dimensionally accurate

Note:

This must be reproduced in colour and is to be read in conjunction
with the full report.



Annex III Project Ref. 2220AS641
12 Swn-Yr-Afon, Dorothy Street, Gelli,
Pentre
Ground and First Floor Plan