

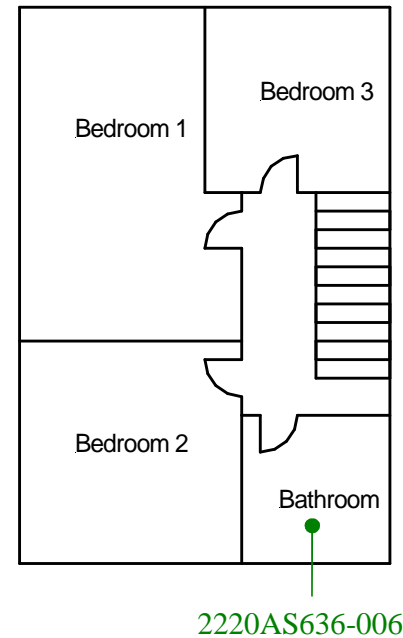
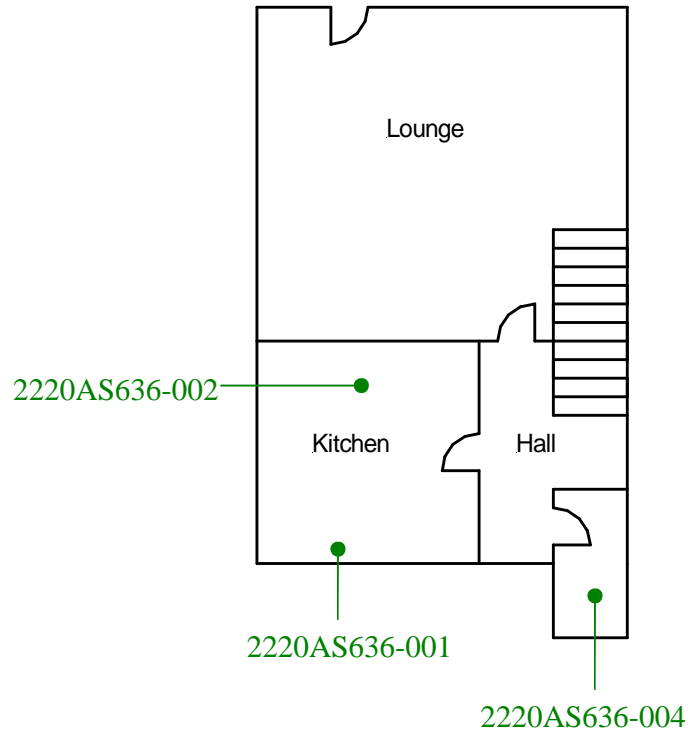
External
2220AS636-008

Ground floor-All areas
2220AS636-003

First floor-All areas
2220AS636-005

Roof space
2220AS636-007

External
2220AS636-009



Site reference points colour coding:

RED for 'positive', 'strongly presumed', 'presumed' and 'contaminated' ACMs

BLUE for 'Presumed to contain ACMs due to no access'

GREEN for 'discounted materials', 'no asbestos suspected' and 'negative

BLACK for 'removed' ACMs

Do not scale, not dimensionally accurate

Note:

This must be reproduced in colour and is to be read in conjunction with the full report.



Annex III Project Ref. 2220AS636
14 Swn-yr-Afon, Dorothy Street, Gelli, Pentre
Ground and First Floor Plan