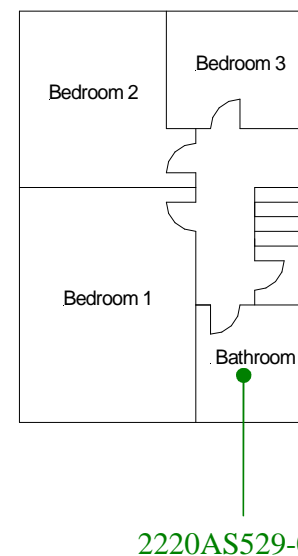
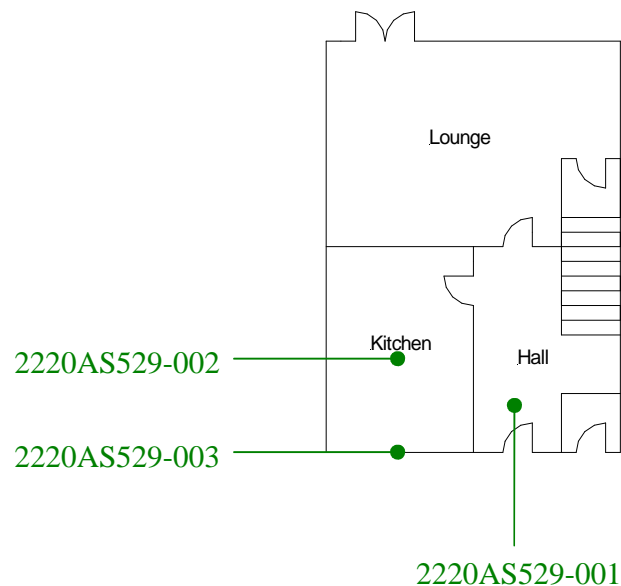


Ground floor – All areas

2220AS529-004

First floor – All areas

2220AS529-005



External – Undercloak

2220AS529-008

Roof space

2220AS529-007

**Site reference points colour coding:**

**RED** for 'positive', 'strongly presumed', 'presumed' and 'contaminated' ACMs

**BLUE** for 'Presumed to contain ACMs due to no access'

**GREEN** for 'discounted materials', 'no asbestos suspected' and 'negative'

**BLACK** for 'removed' ACMs

**Do not scale, not dimensionally accurate**

**Note:**

This must be reproduced in colour and is to be read in conjunction with the full report.



Annex III Project Ref. 2220AS529  
2 Swn Yr Afon, Dorothy Street, Gelli,  
Pentre  
Ground and First Floor Plan