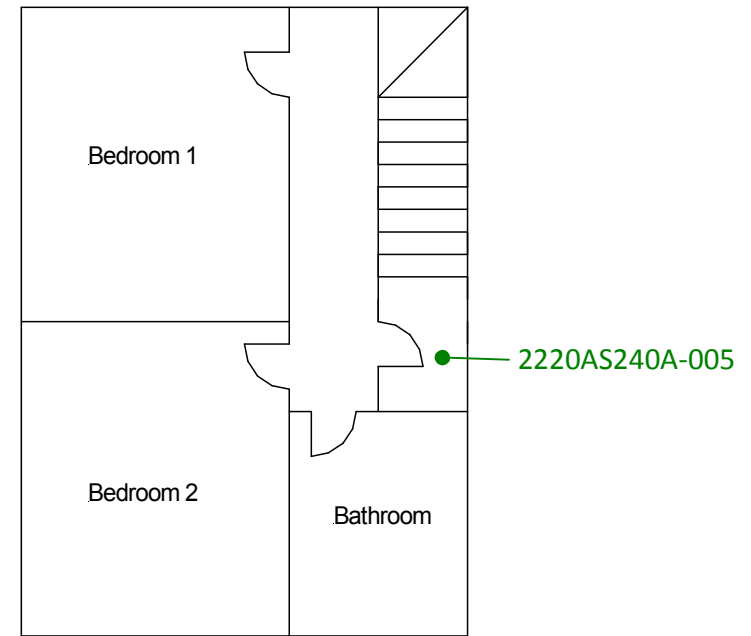
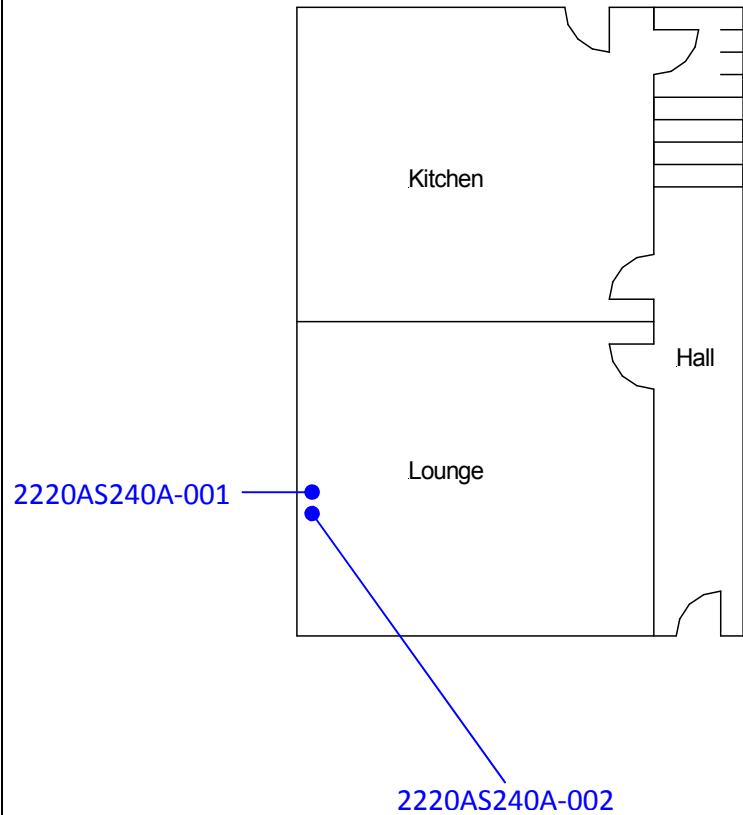


Ground Floor – All Areas  
2220AS240A-003

First Floor – All Areas  
except airing cupboard  
2220AS240A-004



**Site reference points colour coding:**

**RED** for 'positive', 'strongly presumed', 'presumed' and 'contaminated' ACMs

**BLUE** for 'Presumed to contain ACMs due to no access'

**GREEN** for 'discounted materials', 'no asbestos suspected' and 'negative

**BLACK** for 'removed' ACMs

**Do not scale, not dimensionally accurate**

**Note:**

This must be reproduced in colour and is to be read in conjunction with the full report.



Annex III Project Ref. 2220AS240A  
Heating system - 29 Morton Terrace,  
Clydach Vale, Tonypany  
Ground and First Floor Plans