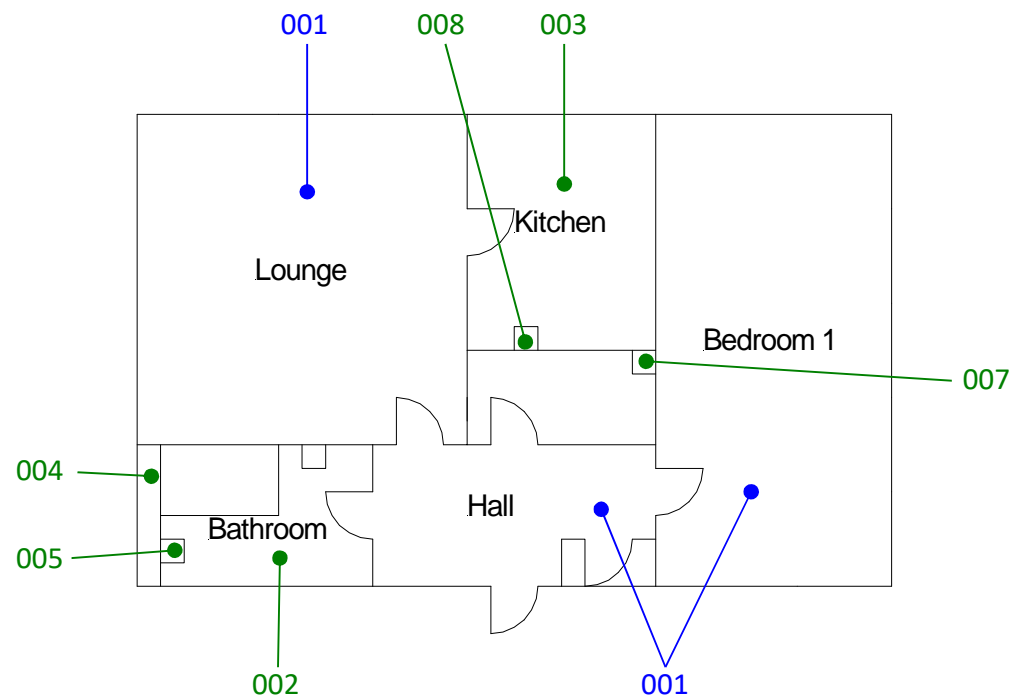


All ceilings  
006



**Site reference points colour coding:**

**RED** for 'positive', 'strongly presumed', 'presumed' and 'contaminated' ACMs

**BLUE** for 'Presumed to contain ACMs due to no access'

**GREEN** for 'discounted materials', 'no asbestos suspected' and 'negative'

**BLACK** for 'removed' ACMs

**Do not scale, not dimensionally accurate**

**Note:**

This must be reproduced in colour and is to be read in conjunction with the full report.



Annex III Project Ref. 2220AS1582  
18 Llys Ben Bowen Thomas, Gelligad Road,  
Ystrad Pentre  
Flat floor plan  
Page 1 of 1