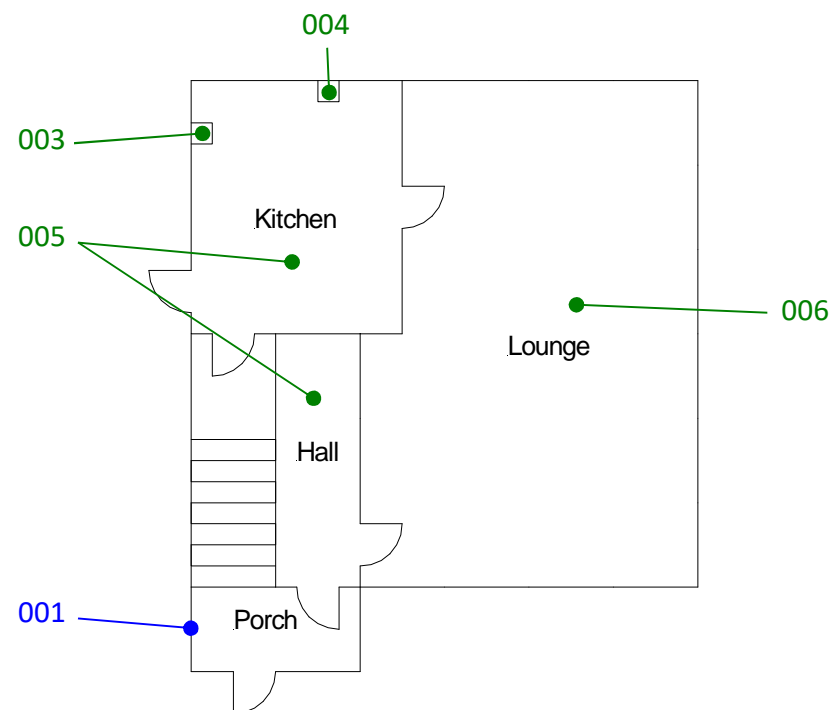


Roof  
004



**Site reference points colour coding:**

**RED** for 'positive', 'strongly presumed', 'presumed' and 'contaminated' ACMs

**BLUE** for 'Presumed to contain ACMs due to no access'

**GREEN** for 'discounted materials', 'no asbestos suspected' and 'negative'

**BLACK** for 'removed' ACMs

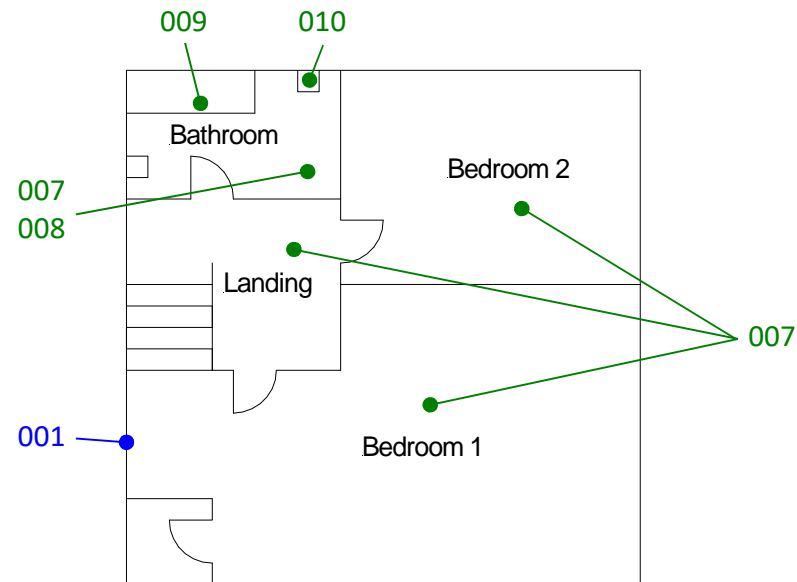
Do not scale, not dimensionally accurate

**Note:**

This must be reproduced in colour and is to be read in conjunction with the full report.



Annex III Project Ref. 2220AS1437  
15 Ael Y Bryn, Treherbert, Treorchy  
Ground floor plan  
Page 1 of 2



**Site reference points colour coding:**

**RED** for 'positive', 'strongly presumed', 'presumed' and 'contaminated' ACMs

**BLUE** for 'Presumed to contain ACMs due to no access'

**GREEN** for 'discounted materials', 'no asbestos suspected' and 'negative'

**BLACK** for 'removed' ACMs

**Do not scale, not dimensionally accurate**

**Note:**

This must be reproduced in colour and is to be read in conjunction with the full report.



Annex III Project Ref. 2220AS1437  
15 Ael Y Bryn, Treherbert, Treorchy  
First floor plan  
Page **2** of **2**