

All
area
001

006

Lounge

003

004

All areas except
lounge
005

002

Kitchen

Hallway

Toilet

010

Site reference points colour coding:

RED for 'positive', 'strongly presumed', 'presumed' and 'contaminated' ACMs

BLUE for 'Presumed to contain ACMs due to no access'

GREEN for 'discounted materials', 'no asbestos suspected' and 'negative

BLACK for 'removed' ACMs

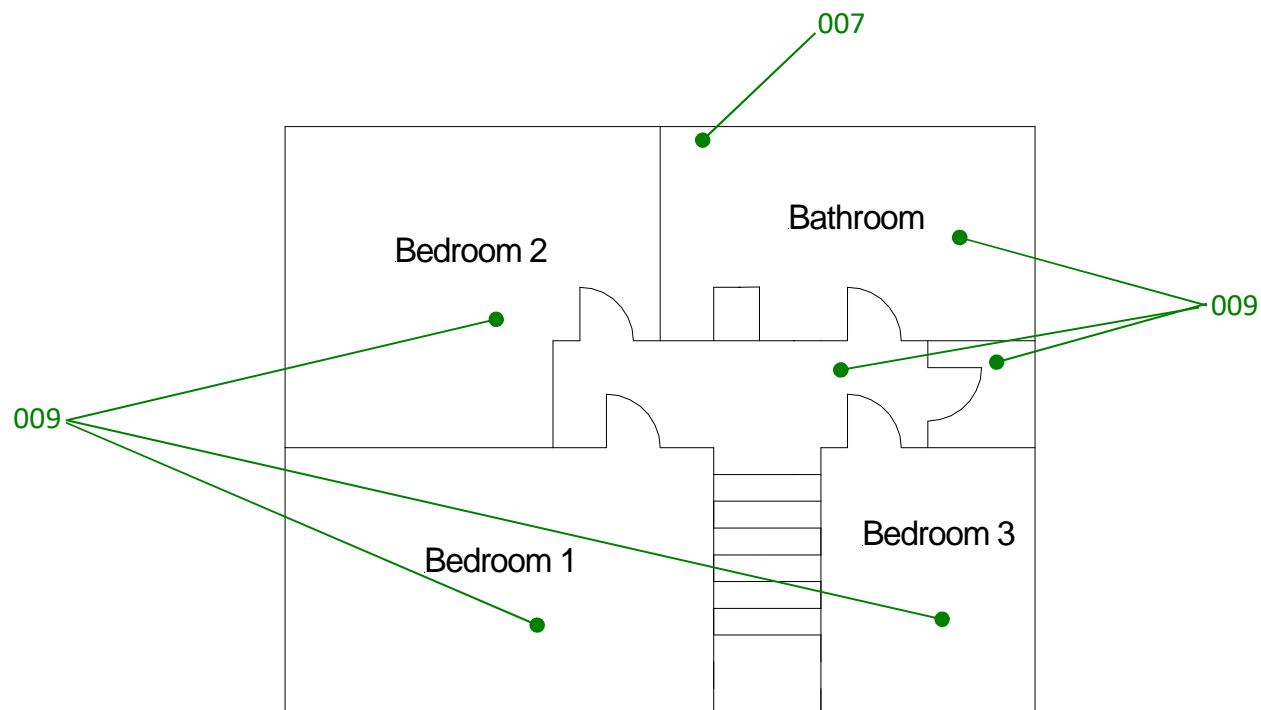
Do not scale, not dimensionally accurate

Note:

This must be reproduced in colour and is to be read in conjunction with the full report.



Annex III Project Ref. 2220AS1396
68 Corbett Street, Treherbert, Treorchy
Ground floor plan
Page 1 of 2



Site reference points colour coding:

RED for 'positive', 'strongly presumed', 'presumed' and 'contaminated' ACMs

BLUE for 'Presumed to contain ACMs due to no access'

GREEN for 'discounted materials', 'no asbestos suspected' and 'negative'

BLACK for 'removed' ACMs

Do not scale, not dimensionally accurate

Note:

This must be reproduced in colour and is to be read in conjunction with the full report.



Annex III Project Ref. 2220AS1396
68 Corbett Street, Treherbert, Treorchy
Ground floor plan
Page 2 of 2