

Roof space
002

All areas except
lounge
003

All areas except
kitchen and
bathroom
005

Roof
012

Site reference points colour coding:

RED for 'positive', 'strongly presumed', 'presumed' and 'contaminated' ACMs

BLUE for 'Presumed to contain ACMs due to no access'

GREEN for 'discounted materials', 'no asbestos suspected' and 'negative'

BLACK for 'removed' ACMs

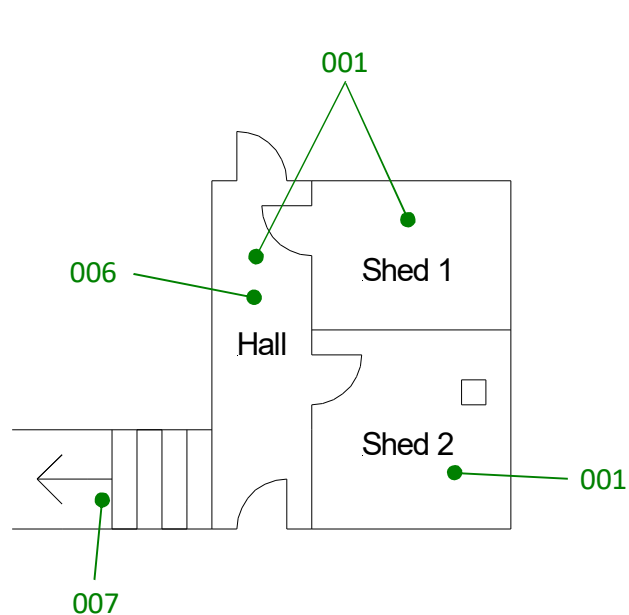
Do not scale, not dimensionally accurate

Note:

This must be reproduced in colour and is to be read in conjunction with the full report.



Annex III Project Ref. 2220AS1329B
86 Corbett Street, Treherbert, Treorchy
First floor plan
Page 1 of 2



Roof spaces
002

All areas
005

Site reference points colour coding:

RED for 'positive', 'strongly presumed', 'presumed' and 'contaminated' ACMs

BLUE for 'Presumed to contain ACMs due to no access'

GREEN for 'discounted materials', 'no asbestos suspected' and 'negative

BLACK for 'removed' ACMs

Do not scale, not dimensionally accurate

Note:

This must be reproduced in colour and is to be read in conjunction with the full report.



Annex III Project Ref. 2220AS1329B
86 Corbett Street, Treherbert, Treorchy
Ground floor plan
Page 2 of 2