

All areas
005

Site reference points colour coding:

RED for 'positive', 'strongly presumed', 'presumed' and 'contaminated' ACMs

BLUE for 'Presumed to contain ACMs due to no access'

GREEN for 'discounted materials', 'no asbestos suspected' and 'negative

BLACK for 'removed' ACMs

Do not scale, not dimensionally accurate

Note:

This must be reproduced in colour and is to be read in conjunction with the full report.

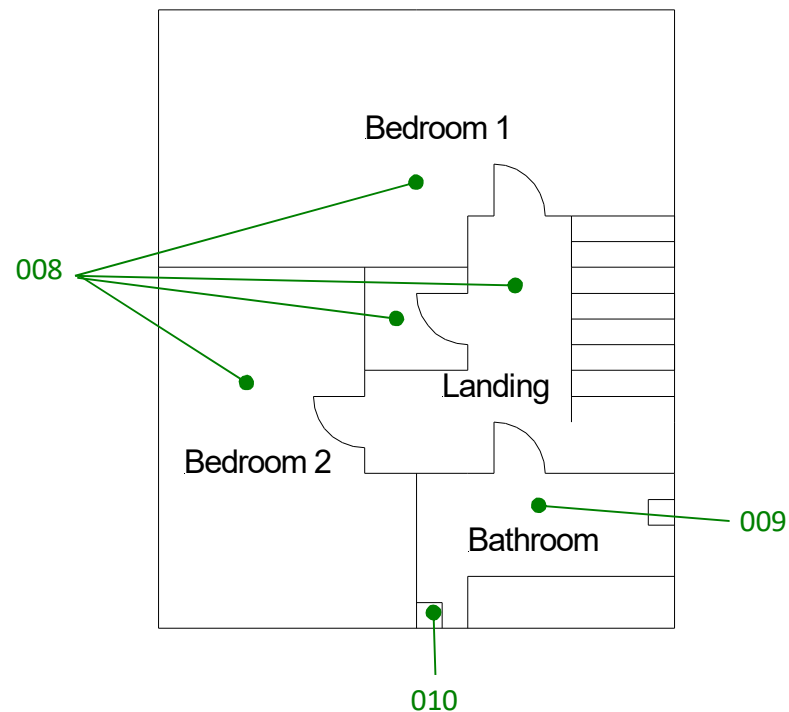


Annex III Project Ref. 2220AS1327A
6 Corbett Street, Treherbert, Treorchy

Ground floor plan

Page 1 of 2

Roof
002



Site reference points colour coding:

RED for 'positive', 'strongly presumed', 'presumed' and 'contaminated' ACMs

BLUE for 'Presumed to contain ACMs due to no access'

GREEN for 'discounted materials', 'no asbestos suspected' and 'negative

BLACK for 'removed' ACMs

Do not scale, not dimensionally accurate

Note:

This must be reproduced in colour and is to be read in conjunction with the full report.



Annex III Project Ref. 2220AS1327A

6 Corbett Street, Treherbert, Treorchy

First floor plan

Page 2 of 2