

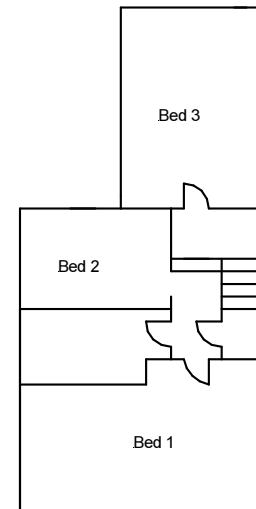
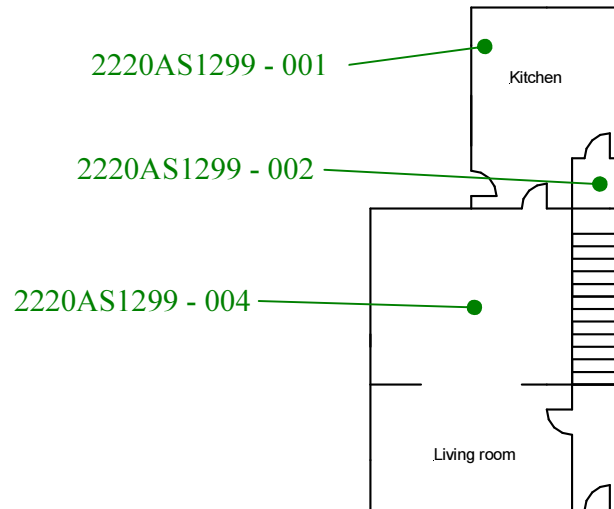
Ground floor all areas  
2220AS1299 - 003

Roof space  
2220AS1299 - 007

Ground floor all areas  
except dining  
2220AS1299 - 005

First floor all areas  
2220AS1299 - 006

External  
2220AS1299 - 008  
2220AS1299 - 009



**Site reference points colour coding:**

**RED** for 'positive', 'strongly presumed', 'presumed' and 'contaminated' ACMs

**BLUE** for 'Presumed to contain ACMs due to no access'

**GREEN** for 'discounted materials', 'no asbestos suspected' and 'negative'

**BLACK** for 'removed' ACMs

**Do not scale, not dimensionally accurate**

**Note:**

This must be reproduced in colour and is to be read in conjunction with the full report.



Annex III Project Ref. 2220AS1299  
20 Meylor Street, Thomostown, Porth.  
Ground and First Floor Plan