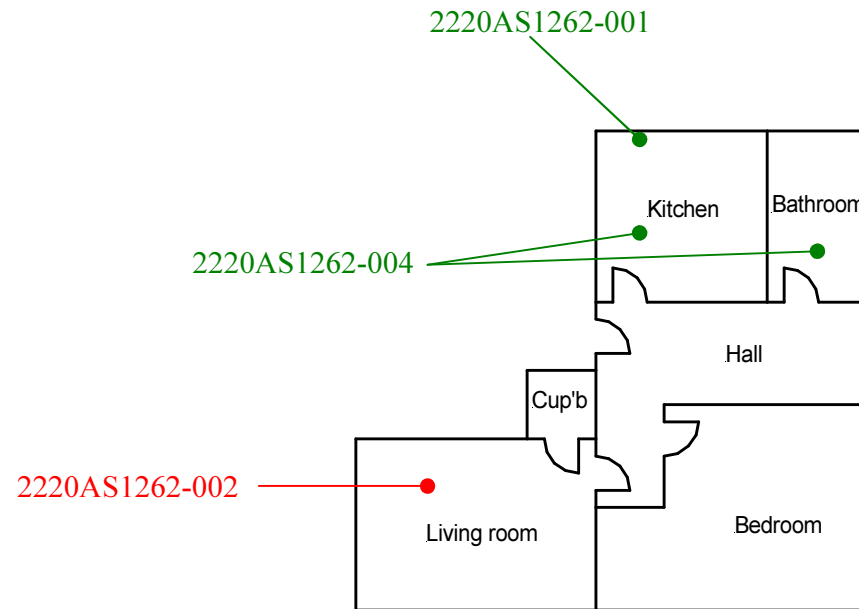


Ground floor-All areas  
except living room  
2220AS1262-003



**Site reference points colour coding:**

**RED** for 'positive', 'strongly presumed', 'presumed' and 'contaminated' ACMs

**BLUE** for 'Presumed to contain ACMs due to no access'

**GREEN** for 'discounted materials', 'no asbestos suspected' and 'negative'

**BLACK** for 'removed' ACMs

**Do not scale, not dimensionally accurate**

**Note:**

This must be reproduced in colour and is to be read in conjunction with the full report.



Annex III Project Ref. 2220AS1262  
Flat 2, Llys Maendy, Ton Pentre, Pentre.  
Ground Floor Plan