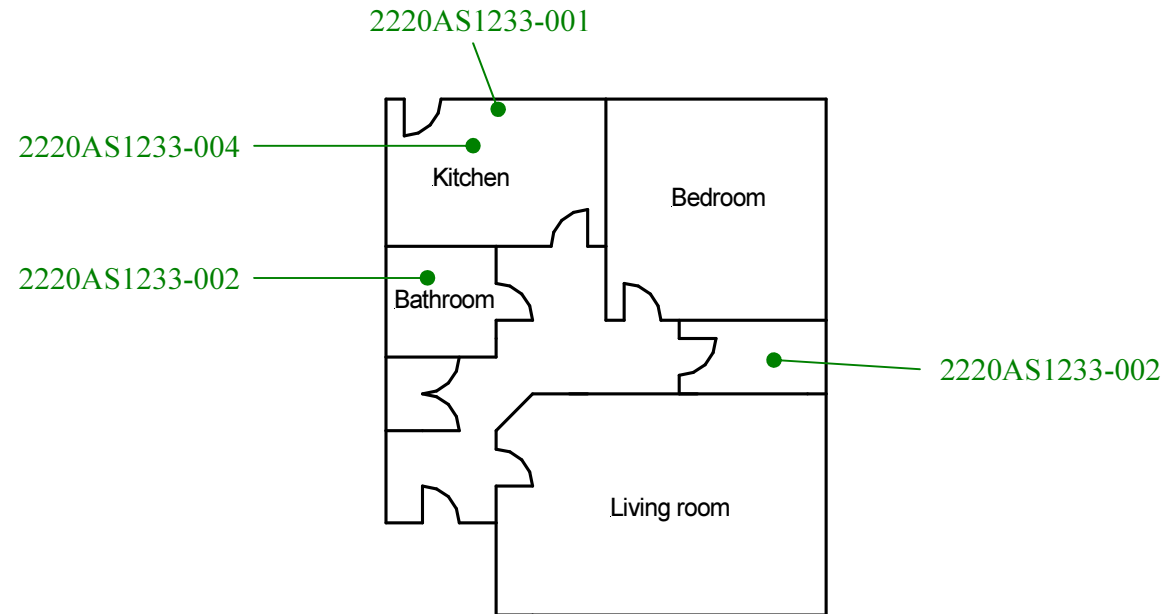


Ground floor-All areas
except WC and bathroom
2220AS1233-003
2220AS1233-005



Site reference points colour coding:

RED for 'positive', 'strongly presumed',
'presumed' and 'contaminated' ACMs

BLUE for 'Presumed to contain ACMs due to no
access'

GREEN for 'discounted materials', 'no asbestos
suspected' and 'negative

BLACK for 'removed' ACMs

Do not scale, not dimensionally accurate

Note:

This must be reproduced in colour and is to be read in conjunction
with the full report.



Annex III Project Ref. 2220AS1233
Flat 37 Llewellyn Street, Pentre.
Ground Floor Plan