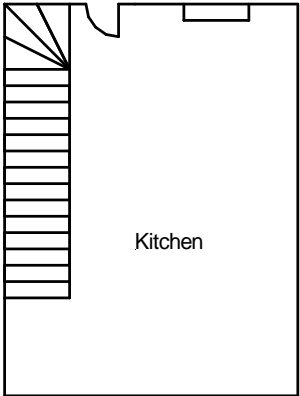


Lower ground floor-All areas
2220AS1203-002
2220AS1203-003

External-Slate
2220AS1203-001

Roof space
2220AS1203-007



Site reference points colour coding:

RED for 'positive', 'strongly presumed',
'presumed' and 'contaminated' ACMs

BLUE for 'Presumed to contain ACMs due to no
access'

GREEN for 'discounted materials', 'no asbestos
suspected' and 'negative

BLACK for 'removed' ACMs

Do not scale, not dimensionally accurate

Note:

This must be reproduced in colour and is to be read in conjunction
with the full report.

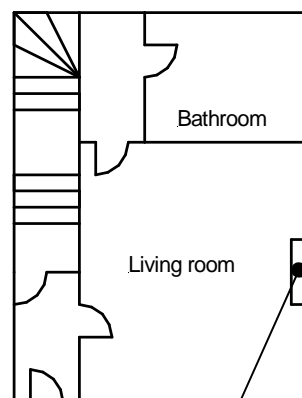


Annex III Project Ref.2220AS1203
6 Vivian Street, Tylorstown, Ferndale.
Lower Ground Floor Plan

External-Slate
2220AS1203-001

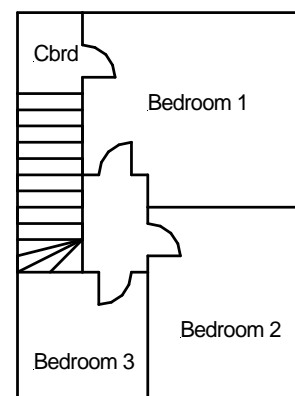
Roof space
2220AS1203-007

Ground floor-All areas
2220AS1203-002
2220AS1203-004



2220AS1203-005

First floor-All areas
2220AS1203-006



Site reference points colour coding:

RED for 'positive', 'strongly presumed',
'presumed' and 'contaminated' ACMs

BLUE for 'Presumed to contain ACMs due to no
access'

GREEN for 'discounted materials', 'no asbestos
suspected' and 'negative

BLACK for 'removed' ACMs

Do not scale, not dimensionally accurate

Note:

This must be reproduced in colour and is to be read in conjunction
with the full report.



Annex III Project Ref. 2220AS1203
6 Vivian Street, Tylorstown, Ferndale.
Ground and First Floor Plan