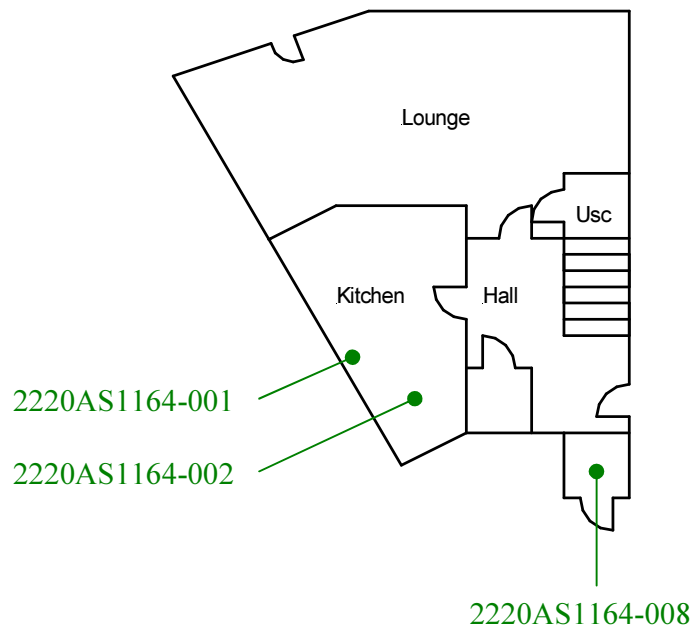
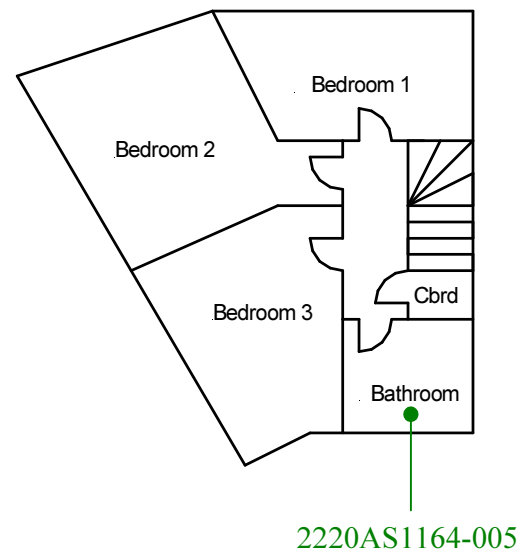


Ground floor – All areas
2220AS1164-003



First floor – All areas
2220AS1164-004



External – Roof, Porch
and bin store
2220AS1164-006

Roof space
2220AS1164-007

D.P.C
2220AS1164-009

Site reference points colour coding:

RED for 'positive', 'strongly presumed',
'presumed' and 'contaminated' ACMs

BLUE for 'Presumed to contain ACMs due to no
access'

GREEN for 'discounted materials', 'no asbestos
suspected' and 'negative

BLACK for 'removed' ACMs

Do not scale, not dimensionally accurate

Note:

This must be reproduced in colour and is to be read in conjunction
with the full report.



Annex III Project Ref. 2220AS1164
10 Swn Yr Afon, Dorothy Street,
Gelli, Pentre.
Ground and First Floor Plan