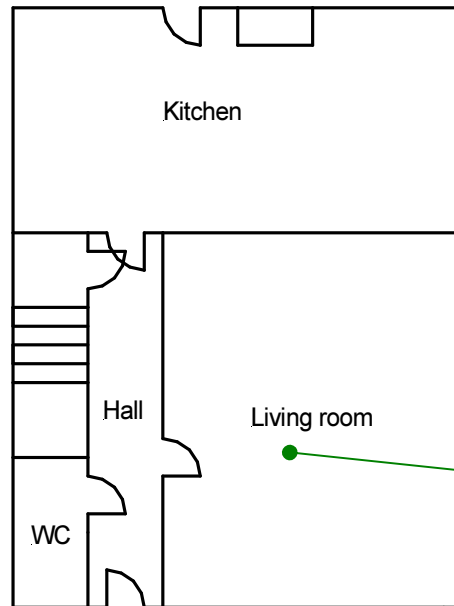


Ground floor – All areas;  
2220AS1152 - 008

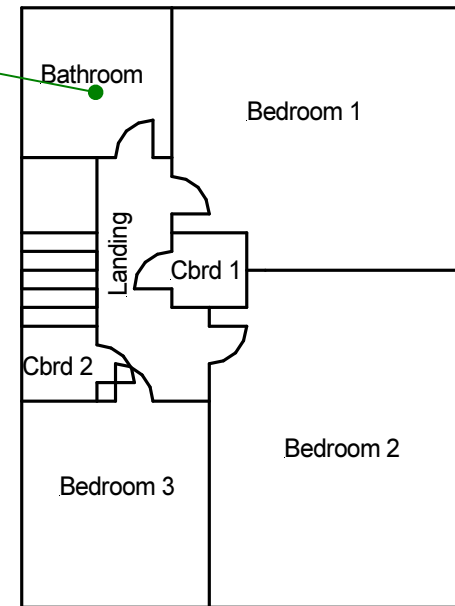
Ground floor – All areas  
except living room;  
2220AS1152 - 004

External – Main roof  
and porch;  
2220AS1152 - 002

Roof space – Sarking felt;  
2220AS1152 - 007  
First floor – All areas;  
2220AS1152 - 006



2220AS1152 - 005



2220AS1152 - 003

External – Damp  
proof courses;  
2220AS1152 - 001

**Site reference points colour coding:**

**RED** for 'positive', 'strongly presumed',  
'presumed' and 'contaminated' ACMs

**BLUE** for 'Presumed to contain ACMs due to no  
access'

**GREEN** for 'discounted materials', 'no asbestos  
suspected' and 'negative'

**BLACK** for 'removed' ACMs

**Do not scale, not dimensionally accurate**

**Note:**

This must be reproduced in colour and is to be read in conjunction  
with the full report.



Annex III Project Ref. 2220AS1152  
3 Fforch Close, Cemetery Road, Treorchy.  
Ground and First Floor Plan