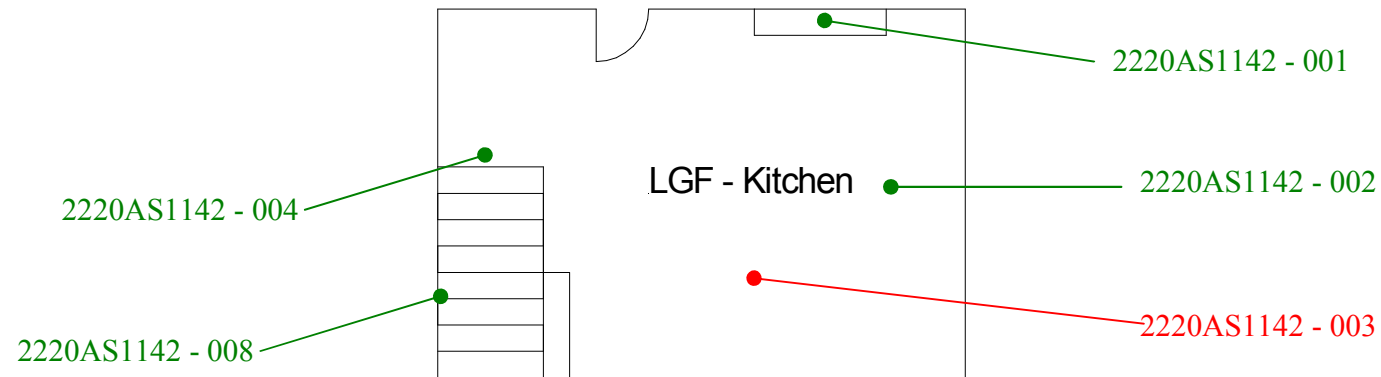


Lower ground floor – Stairs;  
2220AS1142 - 008



**Site reference points colour coding:**

**RED** for 'positive', 'strongly presumed', 'presumed' and 'contaminated' ACMs

**BLUE** for 'Presumed to contain ACMs due to no access'

**GREEN** for 'discounted materials', 'no asbestos suspected' and 'negative'

**BLACK** for 'removed' ACMs

**Do not scale, not dimensionally accurate**

**Note:**

This must be reproduced in colour and is to be read in conjunction with the full report.

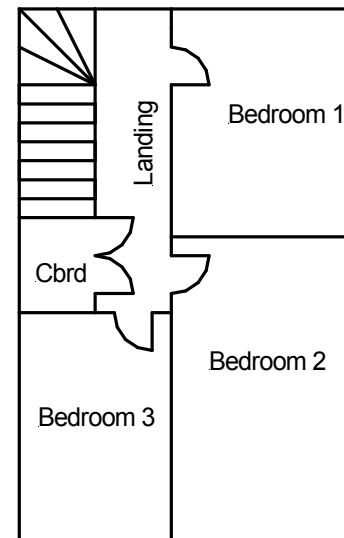
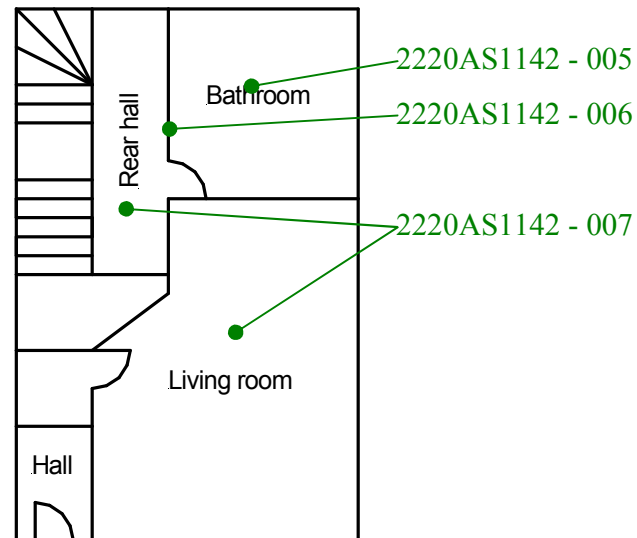


Annex III Project Ref. 2220AS1142  
60 Deri Terrace, Tylorstown, Ferndale.  
Lower Ground Floor Plan

Ground floor – Hall and stairs, and  
First floor – Landing; -  
2220AS1142 - 008

First floor – All  
areas -  
2220AS1142 - 009

Roof space –  
2220AS1142 - 010



**Site reference points colour coding:**

**RED** for 'positive', 'strongly presumed',  
'presumed' and 'contaminated' ACMs

**BLUE** for 'Presumed to contain ACMs due to no  
access'

**GREEN** for 'discounted materials', 'no asbestos  
suspected' and 'negative

**BLACK** for 'removed' ACMs

**Do not scale, not dimensionally accurate**

**Note:**

This must be reproduced in colour and is to be read in conjunction  
with the full report.



Annex III Project Ref. 2220AS1142  
60 Deri Terrace, Tylorstown, Ferndale.  
Ground and First Floor Plan