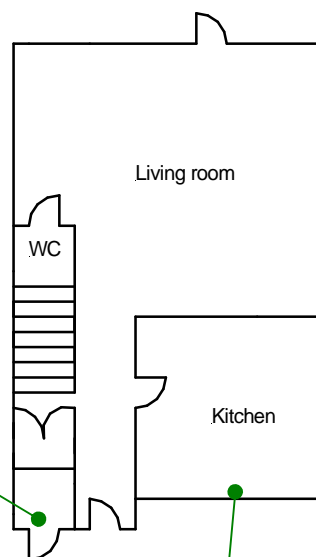


Ground floor all areas  
except store  
2220AS1042-003

External  
2220AS1042-008

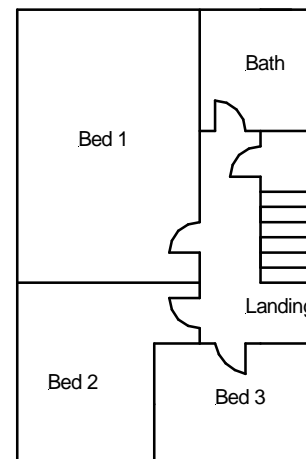
2220AS1042-004

Ground floor all areas except  
cupboard 1 and store  
2220AS1042-002



2220AS1042-001

First floor all areas  
2220AS1042-005



Roof space  
2220AS1042-006

Porch and main roof  
2220AS1042-007

**Site reference points colour coding:**

**RED** for 'positive', 'strongly presumed',  
'presumed' and 'contaminated' ACMs

**BLUE** for 'Presumed to contain ACMs due to no  
access'

**GREEN** for 'discounted materials', 'no asbestos  
suspected' and 'negative

**BLACK** for 'removed' ACMs

**Do not scale, not dimensionally accurate**

**Note:**

This must be reproduced in colour and is to be read in conjunction  
with the full report.



Annex III Project Ref.2220AS1042  
1 Swn yr Afon, Dorothy Street, Gelli, Pentre  
Ground and First Floor Plan